



# JSC "PIASTRELLA"

## ЗАТ "ПІАСТРЕЛЛА"

7 Stroyindustriya str., 01013, Kiev, Ukraine, tel.: +380 (044) 545-70-58, tel./fax: +380 (044) 545-70-57;  
р/р 26001000695201 в АКБ «Київ» м. Києва, МФО 322498, ЗКПО 33293530 св-во 100027960 ІПН 332935326587;  
р/р 26000010005606 в Філії «УніКредит Банк», ТзОВ м. Києва, МФО 300744; e-mail: [piastrella@piastrella.com.ua](mailto:piastrella@piastrella.com.ua)  
Web: <http://www.piastrella.com.ua>

### JSC PIASTRELLA PRODUCT INFORMATION

Piastrella, JSC is a manufacturer of ceramic tiles – to be exact porcelain tiles (or porcelain stoneware so-called "gres") and is capable to produce up to 2.5 million sq. m. ceramic tiles per year (about 200 000 sq. m. per month). Our products are made with Italian technology, using the Italian equipment and are certified in Ukraine and Belarus. The main products are kinds of ceramic porcelain tiles so-called "Salt-pepper" 300\*300\*8 mm 300\*300\*12 mm - plain and structured, steps, as well as monochrome porcelain tiles (so-called "Monocolor" kind).

**Let me accentuate your attention to the very durable porcelain stoneware 12 mm thicknesses.** It was designed specifically for areas with high loads on the floor surface.

Increased thickness achieves new indicators of strength, which makes porcelain tile floors to be very durable. This is a promising material, which is great for flooring in industrial and commercial buildings, which require increased strength and durability. Also it is recommended for flooring on the entrance groups, manufacturing and warehouse facilities, which use lifting equipment, trucks and heavy machinery to move goods, supermarkets, shopping malls, airports, train stations, car dealerships, car repair, as well as places with high humidity - pools, car washes and under open sky - where required the frost resistance and the ability to thermal shock resistance.

**Our benefits** that we can offer you in comparing to other Ukrainian manufacturers of porcelain stoneware:

- We have the largest **variety of tiles colors** from all the manufacturers represented in our market, **most of our products are not producing by no one else;**
- We are not supergiant, but it allows us to be more flexible. Thus, **we can provide you with the lowest time from order to shipment of finished products** (usually - within one week). The presence of significant stocks usually allows us to ship the same day;
- Moreover, at your request we **can produce tiles in an exclusive color;**
- If the client has serious ideas about tiles that he needed - color, texture surfaces, dimensions, etc., we **can design and set up production** of such tiles. If you have any ideas about a **new product range**, which would have sold well in our market, we can start manufacturing such products.



\* Manufacturing is negotiated separately in each case

**Production is divided into the following groups:**

1. Light colors - KG 02, KG 06, KG 10
2. Colored gres - all the rest kinds, of which KG 08, KG 09, KG 11, KG 12, KG 15, KG 20 - dark tones
3. KGR - structural stoneware (structural surface)
4. KGS – steps
5. MC - monochrome stoneware, so-called Monocolor
6. UT - extremely durable gres 12 mm thickness

**Explanation of Product encoding:**

1. Lettering «KG» - is porcelain stoneware (gres), the following letters: S - steps, R - with a structural surface; lettering «UT» - extremely durable gres 12 mm thickness, "MC" - monochrome stoneware, so-called "Monocolor".
2. The two following digits is the color code: 02 – beige, 03 - light-gray, 04 - gray, 06 - beige-brown, 07 - light mustard, 08 - dark mustard, 09 - green, 10 - beige-green, 11 – black, 12 – dark-brown, 15 – pink, 17 - light green, 20 - bordeaux-gray.
3. Letter (letters) after the color code – is a tone code. This label is technological in nature and does not affect the cost of production.
4. Figure by a fraction - is a caliber of products. This label is technological in nature and does not affect the cost of production.

For example:

- Designation of "Ceramic tile KG 02 N/5" is interpreted as follows: Ceramic tile - stoneware, beige color, Tone H, Caliber 5.

- Designation of "Ceramic tile KG 02 VJ/5" is interpreted as follows: Ceramic tile - stoneware, beige color, Tone VJ, Caliber 5.

«H» and «VJ» have some differences in color saturation.

**Characteristics of product packaging:**

Package	Characteristics	Tile's thickness	
		8 mm	12 mm
Box 320x320x150 mm	Number of tiles in box, pcs.	17	11
	Number of m <sup>2</sup> in box	1,53	1,0
	Box weight, kg	28 ± 1	28,6 ± 1
Pallet 1200x800x800 mm	Number of boxes on pallet, pcs.	40	40
	Number of tiles on pallet, pcs.	680	440
	Number of m <sup>2</sup> on pallet	61,2	40
	Pallet weight, kg	1080-1120	1140-1160

**Table of typical sizes:**

Calibers		Coordinating dimensions, mm	Nominal dimensions, mm	Tile's thickness, mm
Index	Dimensions, mm			
<b>1</b>	298,5-299,5	302x302	300x300	8 (12)
<b>2</b>	299,5-300,5			
<b>3</b>	300,6-303,5			
<b>4</b>	301,6-302,5	305x305	303x303	8 (12)
<b>5</b>	302,6-303,5			
<b>6</b>	303,6-304,5			
<b>7</b>	304,6-305,5	307x307	305x305	8 (12)
<b>8</b>	305,6-306,5			

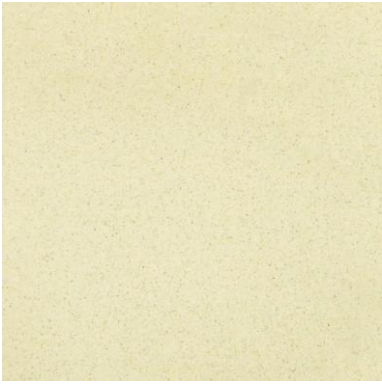
**Comparison table of physical-mechanical properties of tiles 8 and 12 mm thickness**

№	Physical-mechanical characteristics	According to valid National Standard (ДСТУ Б В.2.7-117-2002)	Mean values for tiles 300x300x8 mm	Mean values for tiles 300x300x12 mm
1.	Water absorption, % no more than	3,5	0,01-0,5	0,01-0,2
2.	Abrasion resistance, g/sm <sup>2</sup> , no more than	0,18	0,1	0,1
3.	Modulus of rupture, MPa, not less than	28	35-40	45-55
4.	Frost resistance, (Temperatures up to -20° C), number of cycles, not less than	25	50 Resistant	70 Resistant
5.	Thermal shock resistance	Not determined	Resistant	Resistant

**Product characteristics (properties) according to the standard MSZ EN 14411:2007  
"Ceramic tiles – definitions, classification, characteristics and marking"**

Physical and chemical properties	Requirements and declared values	Test/assessment method
Water absorption, %	E ≤ 0,5	MSZ EN ISO 10545-3:1999
Breaking strength, thickness ≥ 7,5 mm, N	Not less than 1300	MSZ EN ISO 10545-4:1999
Modulus of rupture, thickness ≥ 7,5 mm, N/mm <sup>2</sup>	Not less than 35	
Impact resistance	0,83*	MSZ EN ISO 10545-5:1999
Abrasion resistance, mm <sup>3</sup>	Maximum 175	MSZ EN ISO 10545-6:1999
Coefficient of linear thermal expansion (from ambient temperature to 100° C), 1/K	3,90·10 <sup>-6</sup> *	MSZ EN ISO 10545-8:1999
Thermal shock resistance	Resistant*	MSZ EN ISO 10545-9:1999
Frost resistance	Resistant*	MSZ EN ISO 10545-12:1999
Resistance to low concentrations of acid and alkalis	ULA*	MSZ EN ISO 10545-13:1999
Resistance to household chemicals and swimming pool salts	Minimum UB	

\*Informative value



KG 02



KG 03



KG 04



KG 06



KG 07



KG 08



KG 09



KG 10



KG 11



KG 12



KG 15



KG 17



KG 20



KGR 02



KGR 03



KGR 04



KGR 12



KGS 02



KGS 03



KGS 04



KGS 06



KGS 07



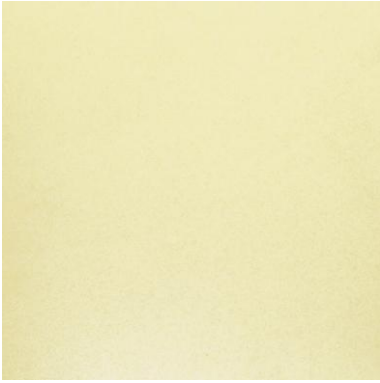
KGS 08



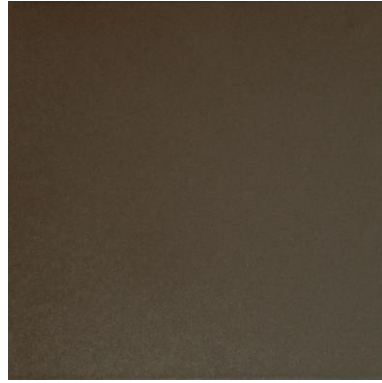
KGS 09



KGS 12



MC 300



MC 302



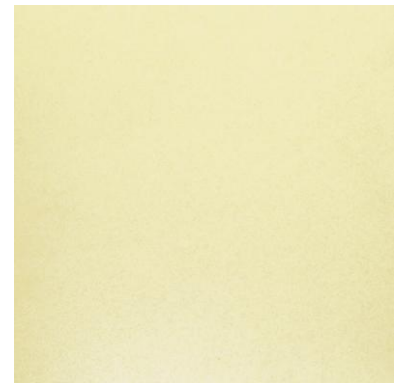
MC 311



UT 02



UT 03



UT 300